

VALVES
Automatic Control



WATER
SUPPLIES

ZECO was founded in 1991 with the focus on manufacturing Water valves, including control valves, balancing valves, gate valves, butterfly valves, check valves, and air valves .etc

In 2008, With the support of the Jiangsu Binhai local government, We set the valve production base and R&D center in Binhai pump and valve industrial park through nearly a year's hard construction. in the following year, ZECO valve group was formally established. Today, We have a modern workshop, more equipped with hundreds of sets of modern equipment, has a professional design team and management team, and hundreds of outstanding employees with strong professional dedication, the group has been promoted to a new level in design, production, and manufacturing of valves.



Series ZF200X
Pressure
Reducing Valves

Made of Ductile Iron GGG50.
SS304 Pilot Valves & Fittings.
PN 10/16 from DN 50 to DN 500.
Flanged Ends DIN PN 10/16.



Series ZF400X
Flow Control
Valves

Made of Ductile Iron GGG50.
SS304 Pilot Valves & Fittings.
PN 10/16 from DN 50 to DN 500.
Flanged Ends DIN PN 10/16.



Series ZF500X
Pressure Sustaining/
Relief Valves

Made of Ductile Iron GGG50.
SS304 Pilot Valves & Fittings.
PN 10/16 from DN 50 to DN 500.
Flanged Ends DIN PN 10/16.



Series ZF509X
Surge Anticipating
Valves

Made of Ductile Iron GGG50.
SS304 Pilot Valves & Fittings.
PN 10/16 from DN 50 to DN 500.
Flanged Ends DIN PN 10/16.



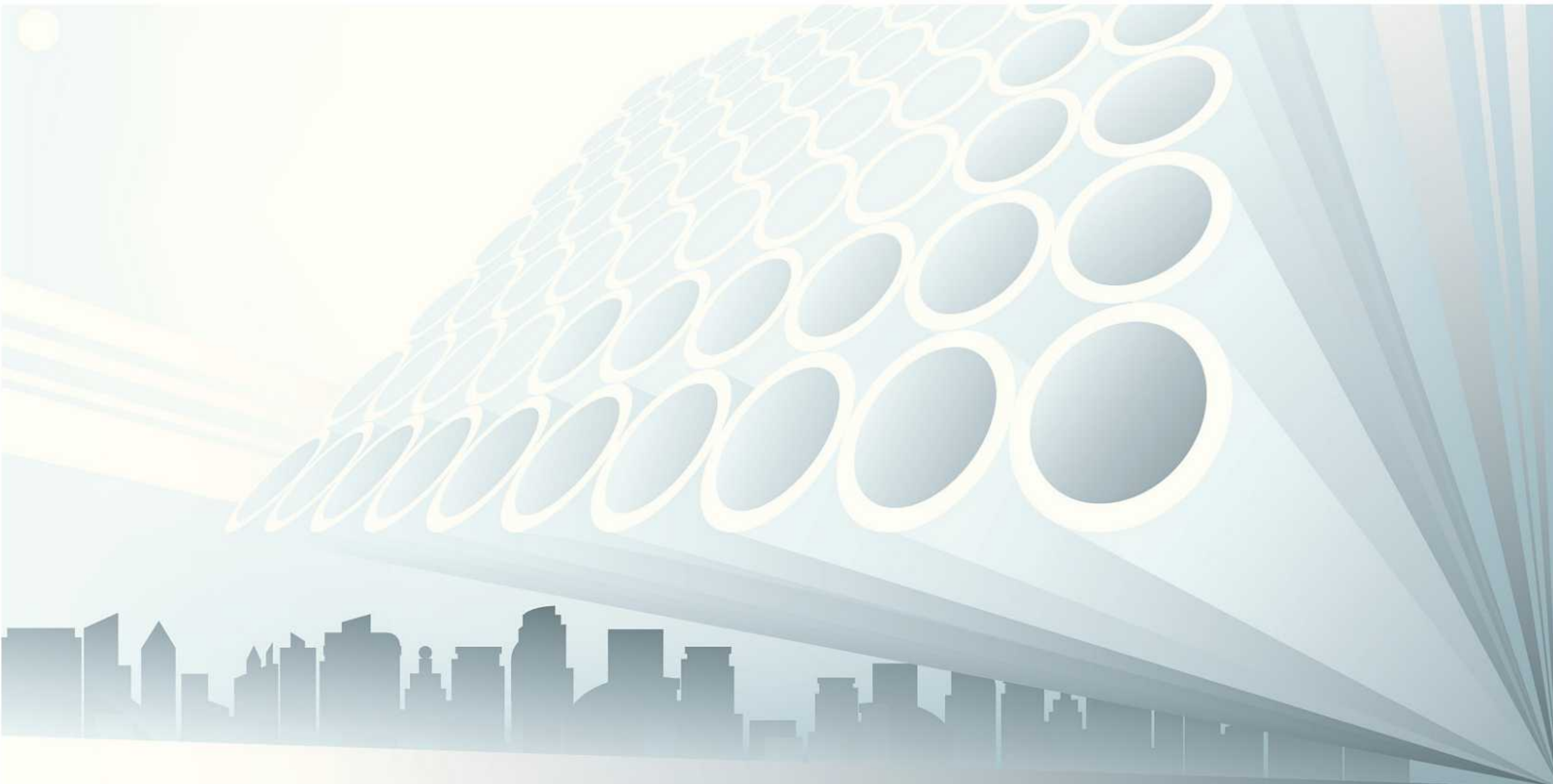
Series ZF109X
Altitude Control
Valves

Made of Ductile Iron GGG50.
SS304 Pilot Valves & Fittings.
PN 10/16 from DN 50 to DN 500.
Flanged Ends DIN PN 10/16.



Series ZFH745X
Y Pattern
Control Valves

Made of Ductile Iron GGG50.
Multiple Function.
PN 10/16 from DN 50 to DN 300.
Flanged Ends DIN PN 10/16.



HEAD OFFICE & SALES OPERATION CENTER

No.3999, Cao'an Road, Jiading,
Shanghai, China.

Tel: +86 21 5959 9008

E-mail: Sales@zecovalve.com

YANCHENG FACTORY

No.99, Century Avenue, Binhai, Yancheng
Jiangsu, China

Tel: +86 0515-89188888 89199999

E-mail: Marketing@zecovalve.com



www.zhengfengvalve.com



www.zhengfengvalve.com



About Us

| | |
|--------------------------------|---|
| Major Approvals | Approved and certified by WRAS, FM, CCC, DNV, ISO 9001, ISO14001,ISO 18001,CE, TS .etc |
| Tests & Inspections | Metallography test, Chemical composition test, Diaphragm lifetime test, Valve low-pressure test & high-pressure test, Coating thickness test .etc |
| Research & Development | AutoCAD, Solidworks, FEA (FiniteElement Analysis), More than 30patents for utility models and 5 patents for invention |
| Production Plants & Equipments | We have two production centers inChina with 300 sets of production and test equipments. |
| Employee & Sales | Currently, we have over 650employees and our annual sales amount is over 25 million us dollars |

VALVES
Concentric & Offset Butterfly



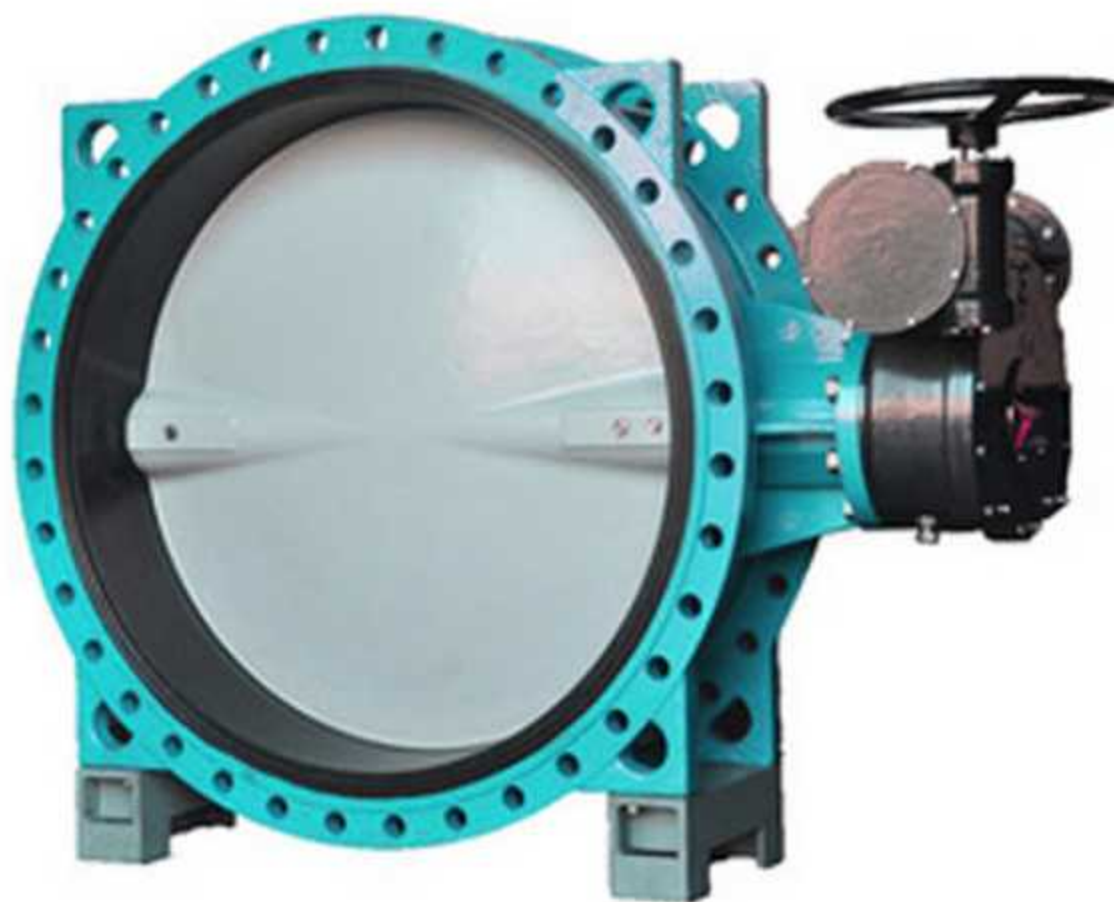
Series ZFD71X
Center Lined
Butterfly Valves

Made of Ductile Iron GGG50.
Wafer Ends.
PN 10/16/CL150 from DN 40 to DN 600.
Face To Face Length EN558/API 609.



Series ZFLTD71X
Center Lined
Butterfly Valves

Made of Ductile Iron GGG50.
Lug Ends.
PN 10/16/CL150 from DN 40 to DN 600.
Face To Face Length EN558/API 609.



Series ZFD341X
Center Lined
Butterfly Valves

Made of Ductile Iron GGG50.
Flange Ends.
PN 10/16/CL150 from DN 50 to DN 1400.
Face To Face Length EN558/API 609.



Series ZFD342X
Flanged
Butterfly Valves

Made of Ductile Iron GGG50.
Double Offset.
PN 10/16/CL150 from DN 100 to DN 2200.
Face To Face Length EN558.

VALVES
Isolation Gate



Series ZFZ45X
Resilient Seat
Gate Valves

Made of Ductile Iron GGG50.
Non Rising Stem.
PN 10/16/25 from DN 40 to DN 1000.
Flanged Ends DIN PN 10/16/25.



Series ZFZ41X
Resilient Seat
Gate Valves

Made of Ductile Iron GGG50.
Rising Stem.
PN 10/16/25 from DN 40 to DN 1000.
Flanged Ends DIN PN 10/16/25.



Series ZFZ41T
Metal Seat
Gate Valves

Made of Ductile Iron GGG50.
Rising Stem.
PN 10/16/25 from DN 40 to DN 1000.
Flanged Ends DIN PN 10/16/25.



Series ZFDZ41X
Knife Gate
Valves

Made of Ductile Iron GGG50.
Rising Stem.
PN 10/16/25 from DN 50 to DN 600.
Wafer/Lug Ends DIN PN 10/16/CL150.

VALVES
Air Venting & Release



Series ZFCARX
Combination
Air Valves

Made of Ductile Iron GGG50.
Clean Water Application.
PN 10/16/25 from DN 50 to DN 400.
Flanged Ends DIN PN 10/16/25.



Series ZFQB2
Double Orifice
Air Valves

Made of Ductile Iron GGG50.
Double Orifice.
PN 10/16/25 from DN 50 to DN 200.
Flanged Ends DIN PN 10/16/25.



Series ZFSCAR
Combination
Air Valves

Made of Ductile Iron GGG50.
Sewage Application.
PN 10/16/25 from DN 50 to DN 250.
Flanged Ends DIN PN 10/16/25.



Series ZFDZ41X
Vacuum Break
Valves

Made of Ductile Iron GGG50.
Vacuum Breaker.
PN 10/16/25 from DN 50 to DN 300.
Flanged Ends DIN PN 10/16/25.

Complements



Series ZFH41X
Silent Type
Check Valves

Made of Ductile Iron GGG50.
Soft Seat.
PN 10/16 from DN 50 to DN 500.
Flanged Ends DIN PN 10/16.



Series ZFH76X
Wafer Type
Check Valves

Made of Ductile Iron GGG50.
Dual Plate.
PN 10/16 from DN 50 to DN 600.
Wafer Ends DIN PN 10/16.



Series ZFH44T
Swing Type
Check Valves

Made of Ductile Iron GG25.
Metal Seat.
PN 10/16/25 from DN 65 to DN 600.
Flanged Ends DIN PN 10/16/25.



Series ZFY41P
Flanged Ends
Strainers

Made of Ductile Iron GGG50.
Y Pattern.
PN 10/16/25 from DN 50 to DN 500.
Flanged Ends DIN PN 10/16/25.



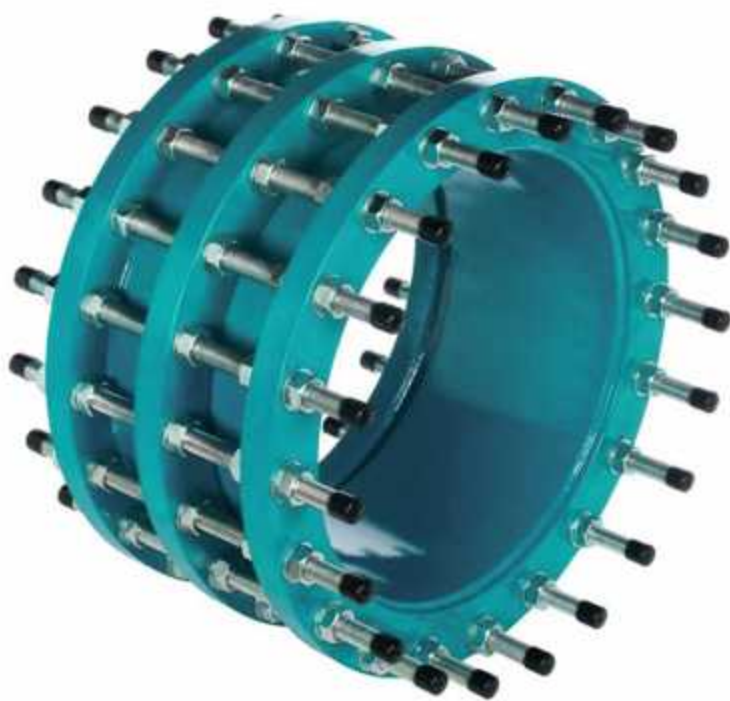
Series Hs41X
Backflow
Preventer

Made of Ductile Iron GGG50.
Double Check Type.
PN 10/16 from DN 50 to DN 300.
Flanged Ends DIN PN 10/16.



Series LHS743X
Backflow
Preventer

Made of Ductile Iron GGG50.
Low Pressure Type.
PN 10/16 from DN 50 to DN 300.
Flanged Ends DIN PN 10/16.



Series ZFFOTH
Dismantling
Joint

Made of Ductile Iron GGG50.
Wide Rnage Type.
PN 10/16 from DN 50 to DN 2000.
Flanged Ends DIN PN 10/16.



Series ZFKXT
Expansion
Rubber Joint

Made of Carbon/Stainless Steel.
Single/Double Sphere.
PN 10/16/25 from DN 32 to DN 1600.
Flanged Ends DIN PN 10/16/25.



Series ZFTXJT
Universal
Flexible Coupling

Made of Ductile Iron GGG50.
Wide Rnage Type.
PN 10/16 from DN 40 to DN 800.
Connection For DI Pipe, Pvc Pipe .etc